



1

Tentative Process/Timeline

First Map Consideration

- January 4, 2022

Second Map Consideration

- January 15, 2022

Final Map Adoption Hearing and Approval

- February 1, 2022
- Must be approved before the first day of March

A photograph of a calendar page with a pen resting on it. The calendar shows dates from 7 to 31, with days of the week labeled (THU, FRI, SAT). The pen is silver and blue.

PLANWEST
PARTNERS, INC.

2

Introduction to Redistricting

Federal Laws

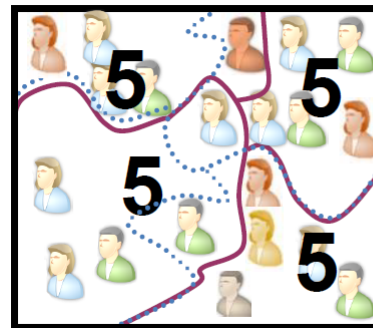
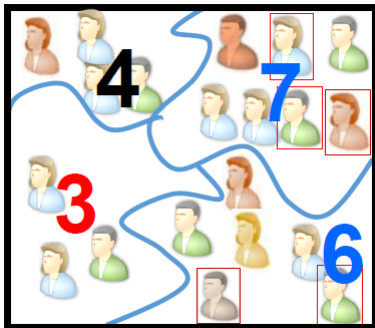
- Equal Population
- Federal Voting Rights Act
- No Racial Gerrymandering

Traditional Redistricting Principles

- Be composed of contiguous territory
- Be geographically compact
- Preserve “identifiable communities of interest”
- Be bounded by natural and/or man-made boundaries
- Minimize voters shifted to different election years
- Preserve the core of existing election areas

3

Over time, districts become uneven in population...



Total Census count = 20

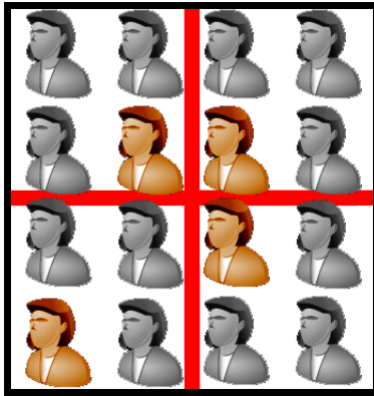
Number of districts = 4

$$20 \div 4 = 5$$

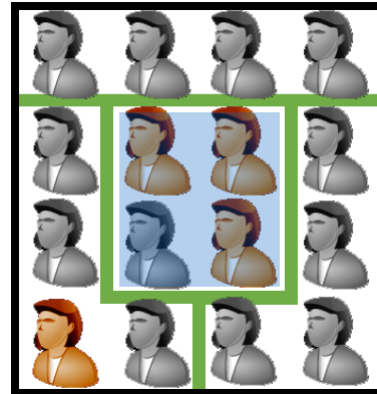
Ideal number of people in district = 5

Every ten years, the district lines must be redrawn to make each district even in the number of people again

4



Minorities make up only $\frac{1}{4}$ in all 4 districts



Minorities make up $\frac{3}{4}$ of this district

If a majority can be drawn, the Voting Rights Act requires it

PLANWEST
PARTNERS, INC.

5

Defining Communities of Interest

- **What defines your community?**
 - Geographic Area
 - Shared issues or characteristics
 - Shared social or economic interests
- **Minimize splits of communities of interest into different trustee areas**
 - Law generally does not limit the kinds of interests that may bind a community
- **COI Examples:**
 - Common assets like schools and shopping areas, housing, culture and language, and employment. No definitive dataset.

Note: Definitions of Communities of Interest may not include relationships with political parties, incumbents, or political candidates.

PLANWEST
PARTNERS, INC.

6

Things to Remember:

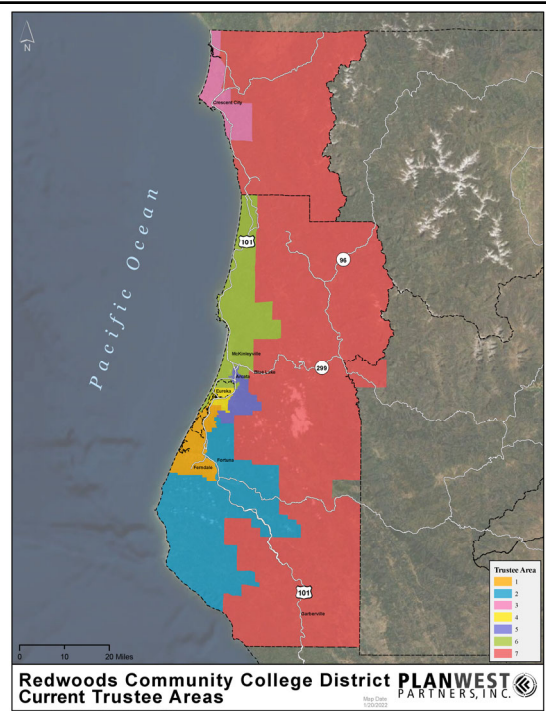
- Strive for population equality
 - Be prepared to justify deviations
- Do not use race as the predominant factor
 - Only as one of many factors.
- Focus on traditional criteria
 - Draw compact, contiguous areas, making use of existing topography and geography, while respecting communities of interest



7

Current

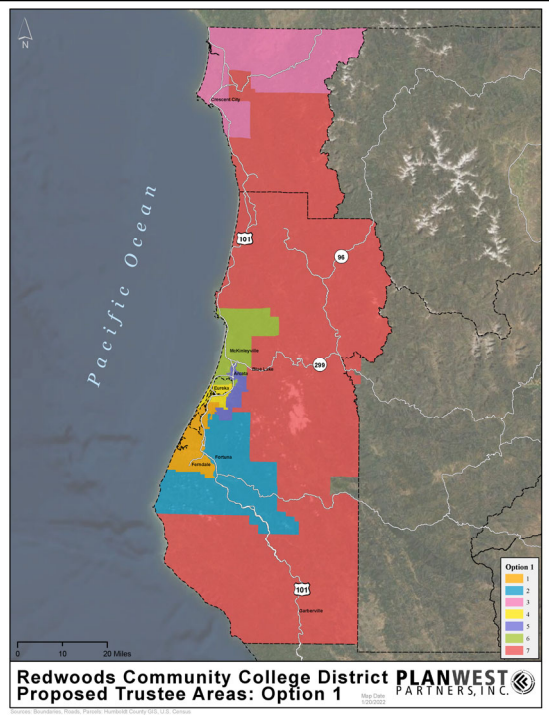
Trustee	Pop 2020	Deviation	% of Total
1	24,127	4.1%	14.9%
2	23,395	0.9%	14.4%
3	19,859	-14.3%	12.2%
4	22,579	-2.6%	13.9%
5	25,080	8.2%	15.5%
6	24,361	5.1%	15.0%
7	22,870	-1.3%	14.1%
Total	162,271		
Average	23,182		



8

Option 1

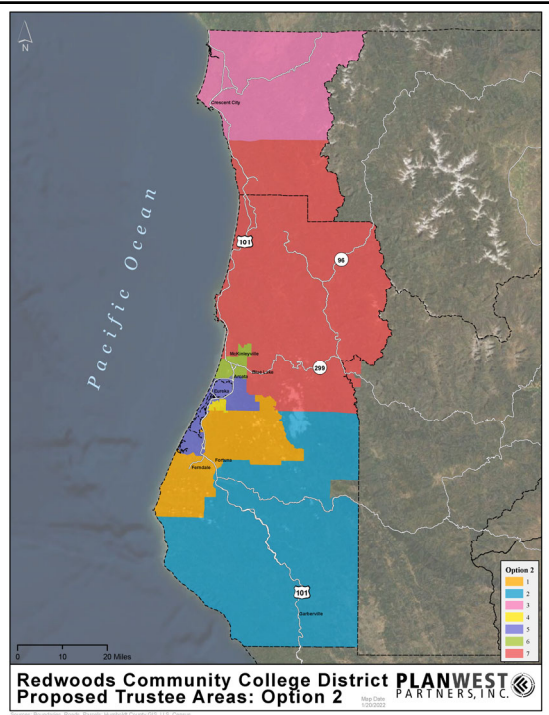
Trustee	Pop 2020	Deviation	% of Total
1	23,697	2.2%	14.6%
2	23,105	-0.3%	14.2%
3	23,044	-0.6%	14.2%
4	23,057	-0.5%	14.2%
5	23,753	2.5%	14.6%
6	23,439	1.1%	14.4%
7	22,176	-4.3%	13.7%
Total	162,271		
Average	23,182		



9

Option 2

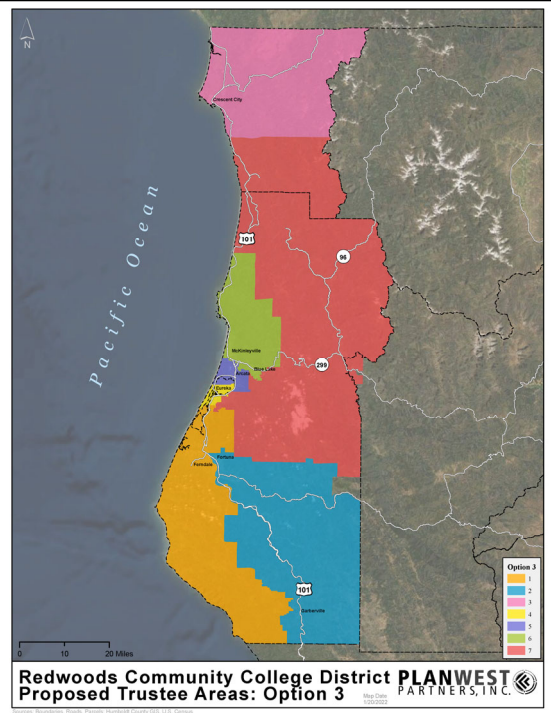
Trustee	Pop 2020	Deviation	% of Total
1	22,845	-1.5%	14.1%
2	21,810	-5.9%	13.4%
3	24,001	3.5%	14.8%
4	23,534	1.5%	14.5%
5	23,811	2.7%	14.7%
6	22,988	-0.8%	14.2%
7	23,282	0.4%	14.3%
Total	162,271		
Average	23,182		



10

Option 3

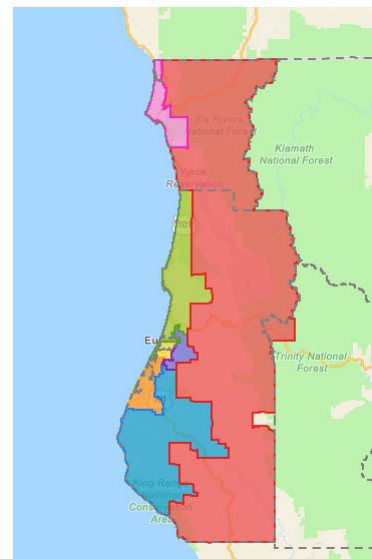
Trustee	Pop 2020	Deviation	% of Total
1	23,370	0.8%	14.4%
2	22,730	-1.9%	14.0%
3	24,001	3.5%	14.8%
4	23,463	1.2%	14.5%
5	22,184	-4.3%	13.7%
6	23,117	-0.3%	14.2%
7	23,406	1.0%	14.4%
Total	162,271		
Average	23,182		



11

Simple Map Review Tool

- Online Interactive Review Map
 - ESRI's "[ArcGIS Online](#)" – similar to Google Maps in ease of use
 - Used to review, analyze and compare maps, not to create them



PLANWEST PARTNERS, INC.

12

Public Hearing & Discussion

- Receive questions and input on communities of interest, existing lines, and suggested revisions.



13

Thank you!



14